



CUORA
PUNTA MITA

mm



Unique Beachfront project inside the gates of The Punta Mita privately gated enclave Resort.

Exclusive beach club, pools, sports courts, kids club, gym & spa, and walking trails.

Access to all the Club Punta Mita amenities, including; 2 Jack Nicklaus Signature Golf Courses, Fitness Center, Racquet Club, several Beach Clubs, hiking and biking trails.*

A dynamic and well established community.

The best high-end luxury residential community in Mexico.

* The purchase price of your Cuora Unit does not include the Club Punta Mita Membership deposit.

PUNTA MITA

Litibú Bay

LOCATION



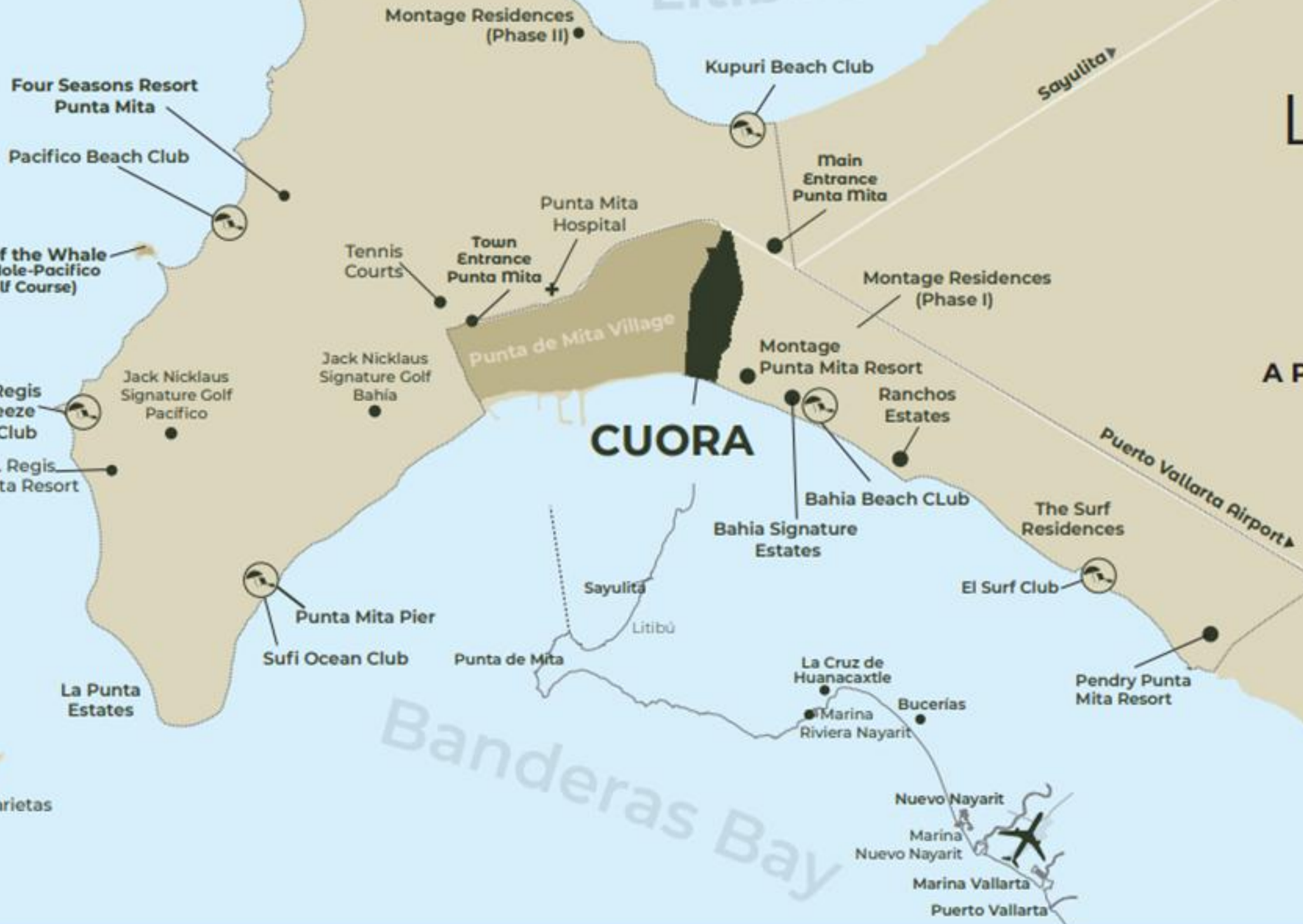
A Peaceful Oasis on Mexico's Pacific ocean.

CUORA

Punta de Mita Village

Banderas Bay

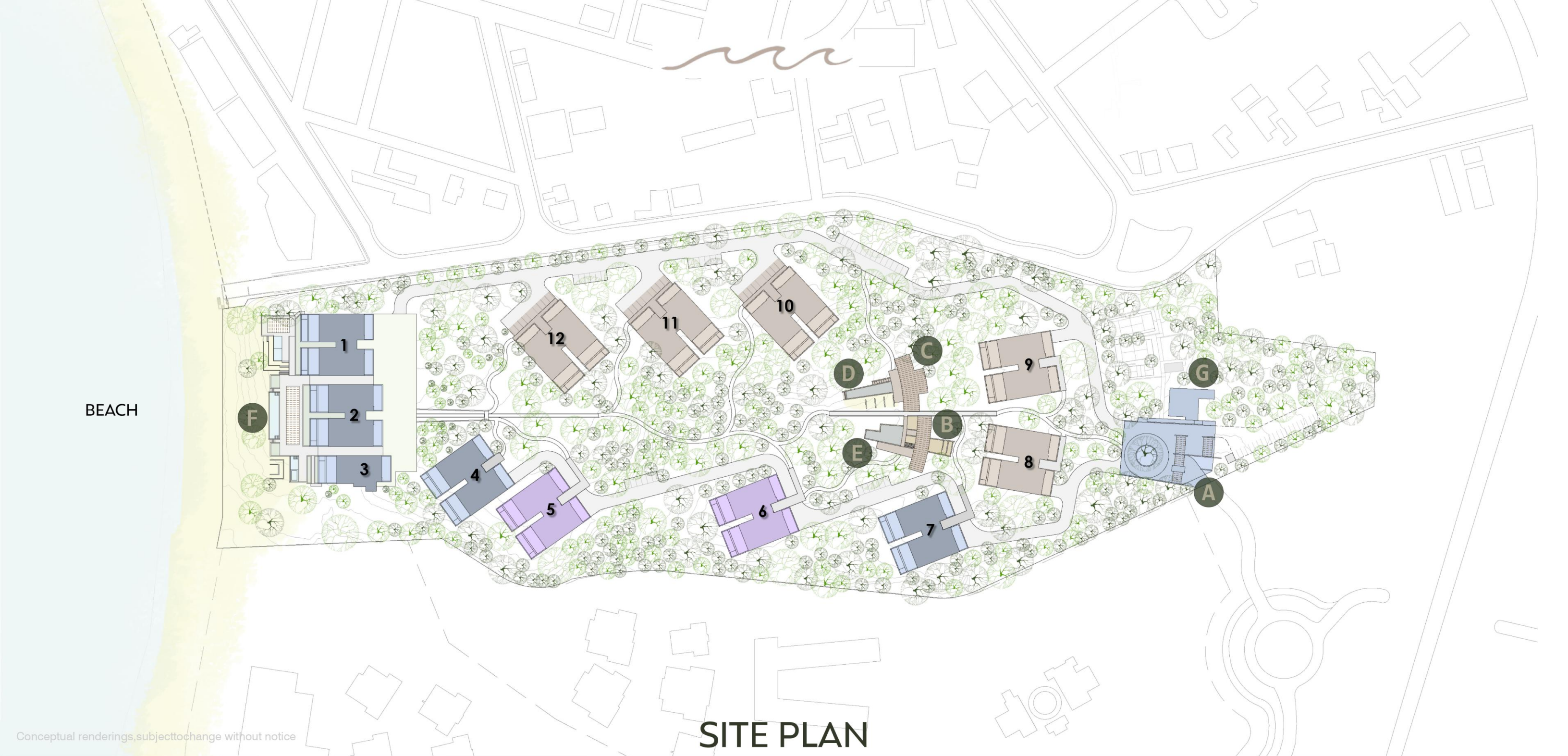
Pacific Ocean



Islas Marietas

La Cruz de Huanacaxtle
Marina Riviera Nayarit
Bucerías

Nuevo Nayarit
Marina Nuevo Nayarit
Marina Vallarta
Puerto Vallarta



BEACH

SITE PLAN

Conceptual renderings, subject to change without notice

PHASE 1

- | | | |
|---------|---------|-----------------------------|
| Tower 1 | | AMENITIES |
| Tower 2 | Tower 4 | A) Access |
| Tower 3 | Tower 7 | F) Beach Club |
| | | G) Mockup Room / HOA Office |

PHASE 2*

- Tower 5
- Tower 6

PHASE 3*

- | | | |
|----------|----------|------------------------------------|
| Tower 8 | | AMENITIES |
| Tower 9 | Tower 11 | B) Kids/Teens Club D) Lap Pool |
| Tower 10 | Tower 12 | C) Gym & Spa E) Jungle Family Pool |

* Still in the design process



BEACH

AMENITIES

- A) Access
- B) Kids / Teens Club
- C) Gym & Spa
- D) Lap Pool
- E) Jungle and Family Pool
- F) Beach Club





BEACH CLUB

Conceptual renderings, subject to change without notice.



Handwritten signature or logo

BEACH CLUB

Conceptual renderings, subject to change without notice.



JUNGLE POOL

Conceptual renderings, subject to change without notice.



CENTRAL AMENITIES

Conceptual renderings, subject to change without notice.



FAMILY POOL

Conceptual renderings, subject to change without notice.





Handwritten signature or logo

PENT GARDEN

Conceptual renderings, subject to change without notice.



PENT GARDEN

Conceptual renderings, subject to change without notice.



LIVING ROOM

Conceptual renderings, subject to change without notice.



LIVING ROOM

Conceptual renderings, subject to change without notice



TERRACE

Conceptual renderings, subject to change without notice.



MASTER BEDROOM



MASTER BATHROOM

Conceptual renderings, subject to change without notice.



Handwritten signature or logo

MASTER BEDROOM 2

Conceptual renderings, subject to change without notice.



MASTER BATHROOM 2

Conceptual renderings, subject to change without notice.

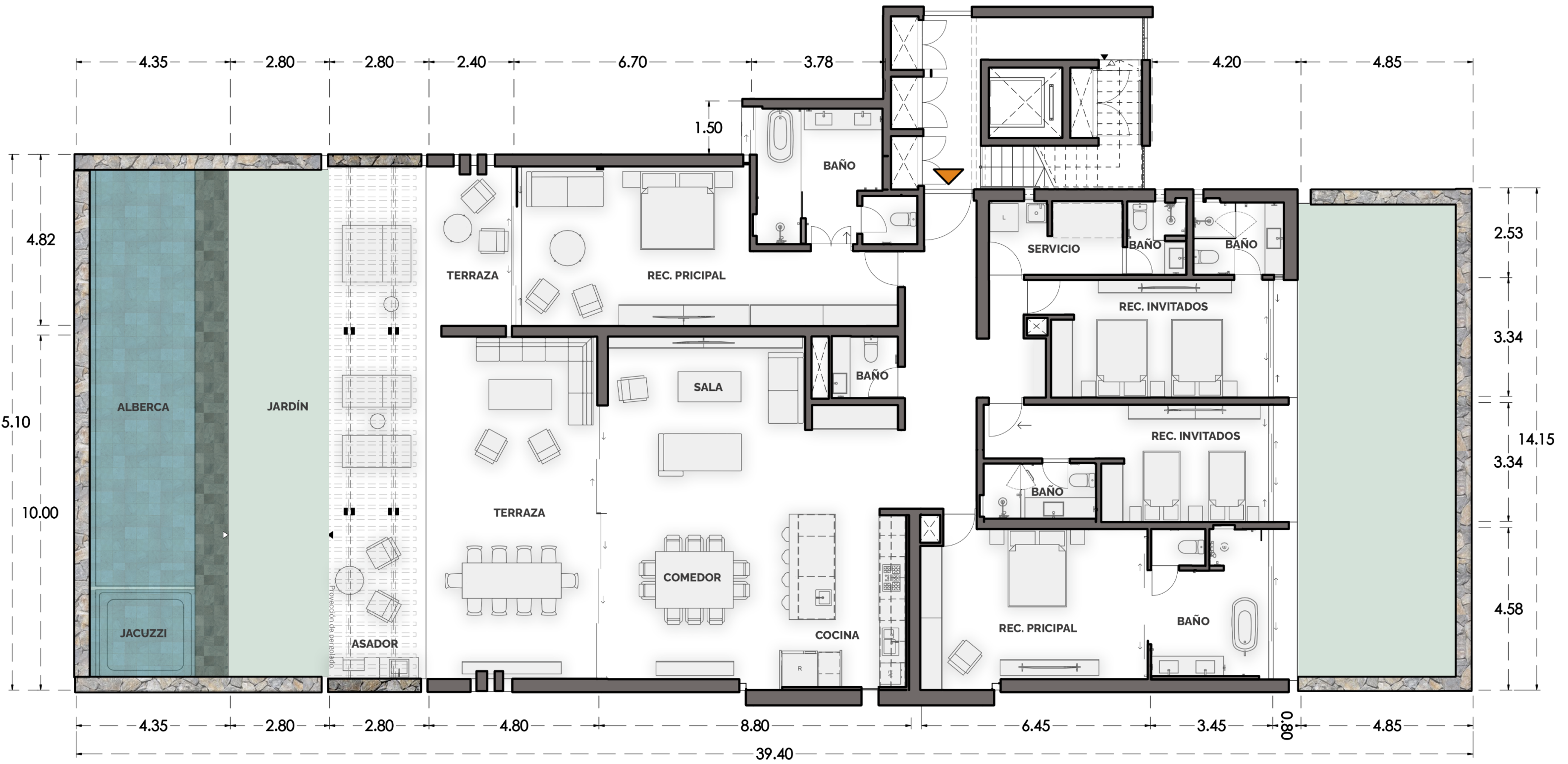


PENTHOUSE TERRACE

Conceptual renderings, subject to change without notice.



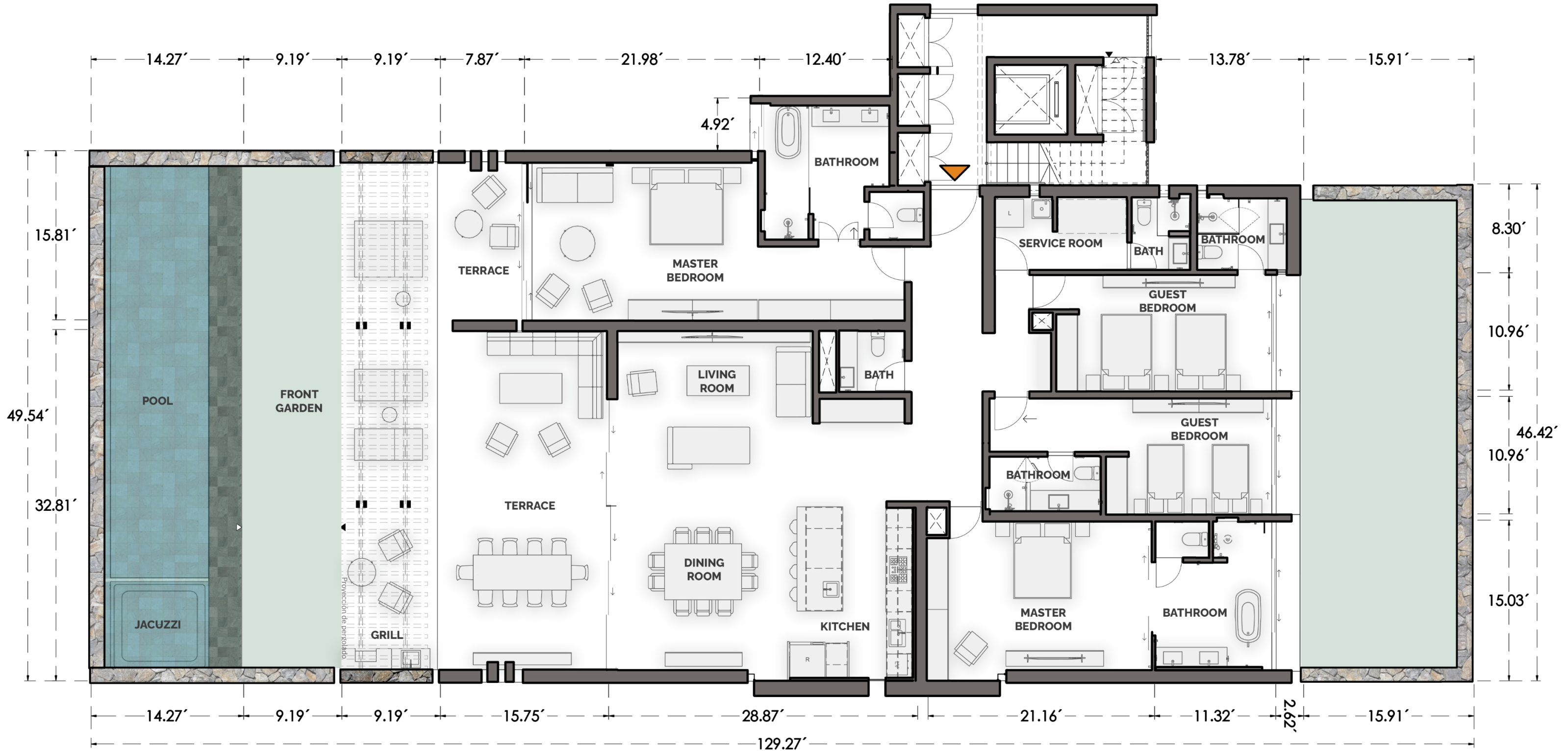
Interior	3,282.99 sq.ft./ 305m2
Terrace,Pool Front Garden	2,281.95 sq.ft./ 212m2
Total	5,564.94 sq.ft./ 517m2



PENT GARDEN



Interior	3,282.99 sq.ft./ 305m2
Terrace,Pool Front Garden	2,281.95 sq.ft./ 212m2
Total	5,564.94 sq.ft./ 517m2



PENT GARDEN



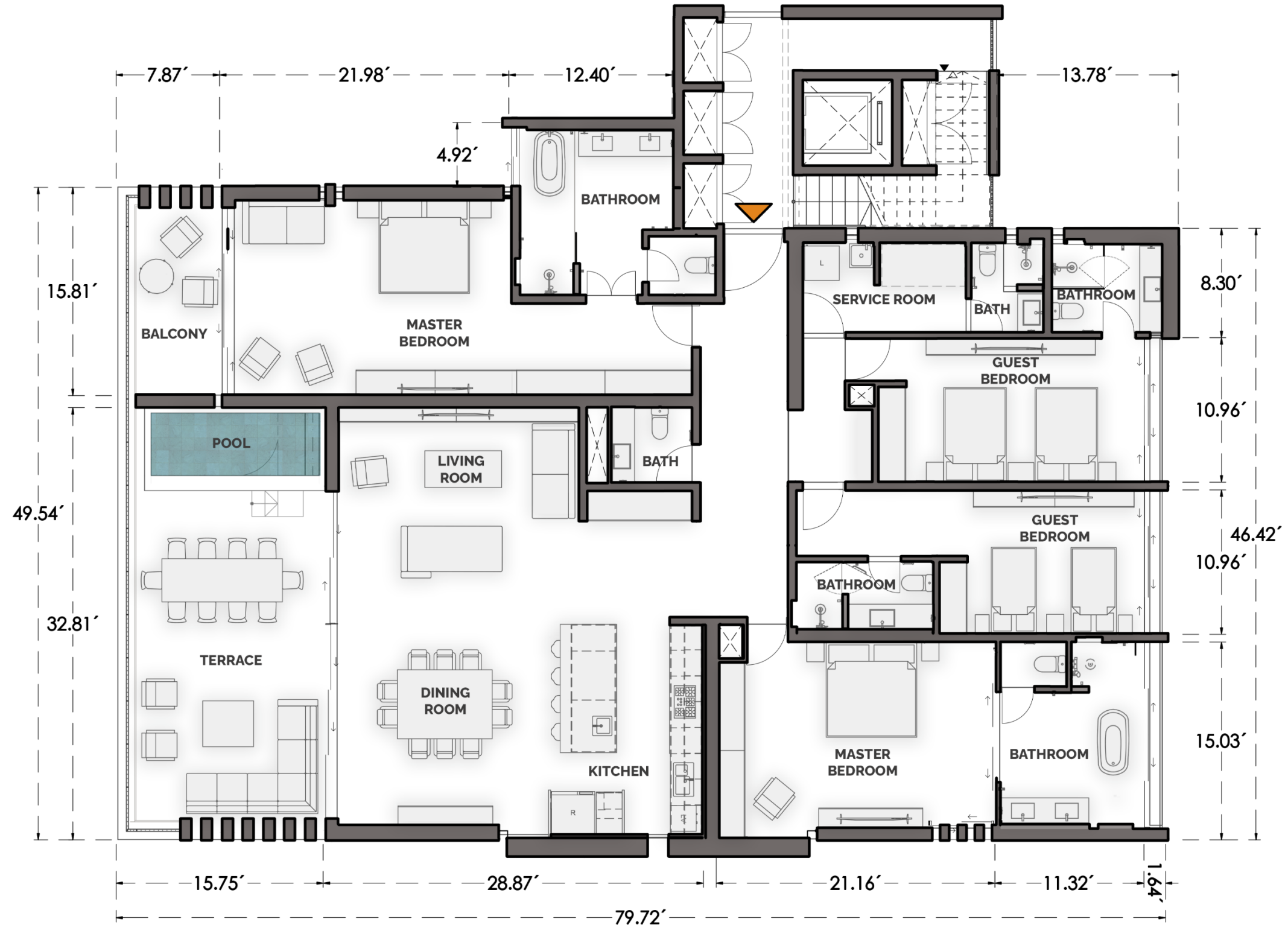
Interior	3,282.99 sq.ft./ 305m ²
Terrace, Balcony	645.84 sq.ft./ 60m ²
Total	3,928.83 sq.ft./ 365m²



LEVEL TWO



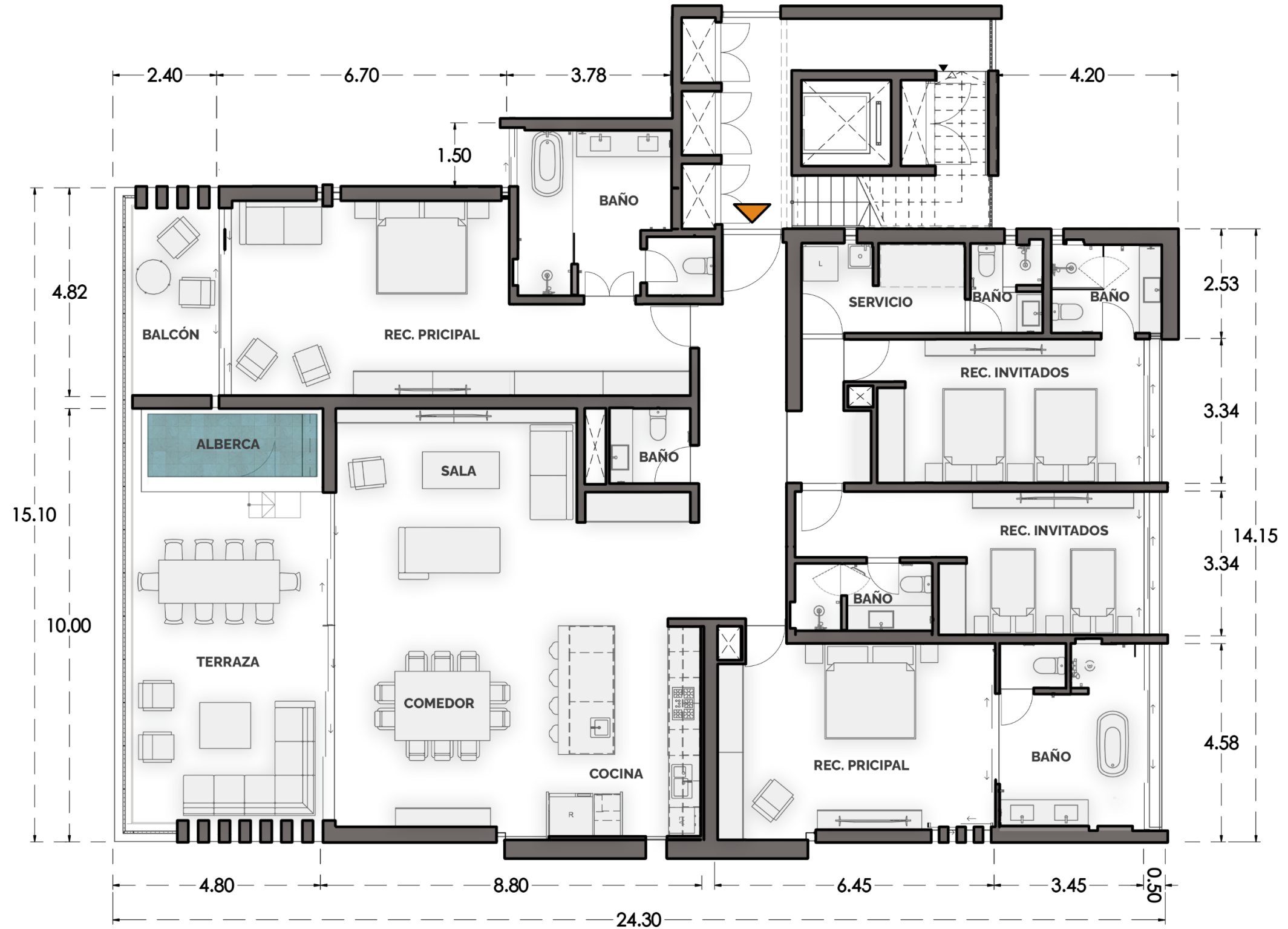
Interior	3,282.99 sq.ft./ 305m ²
Terrace, Balcony	645.84 sq.ft./ 60m ²
Total	3,928.83 sq.ft./ 365m²



LEVEL TWO



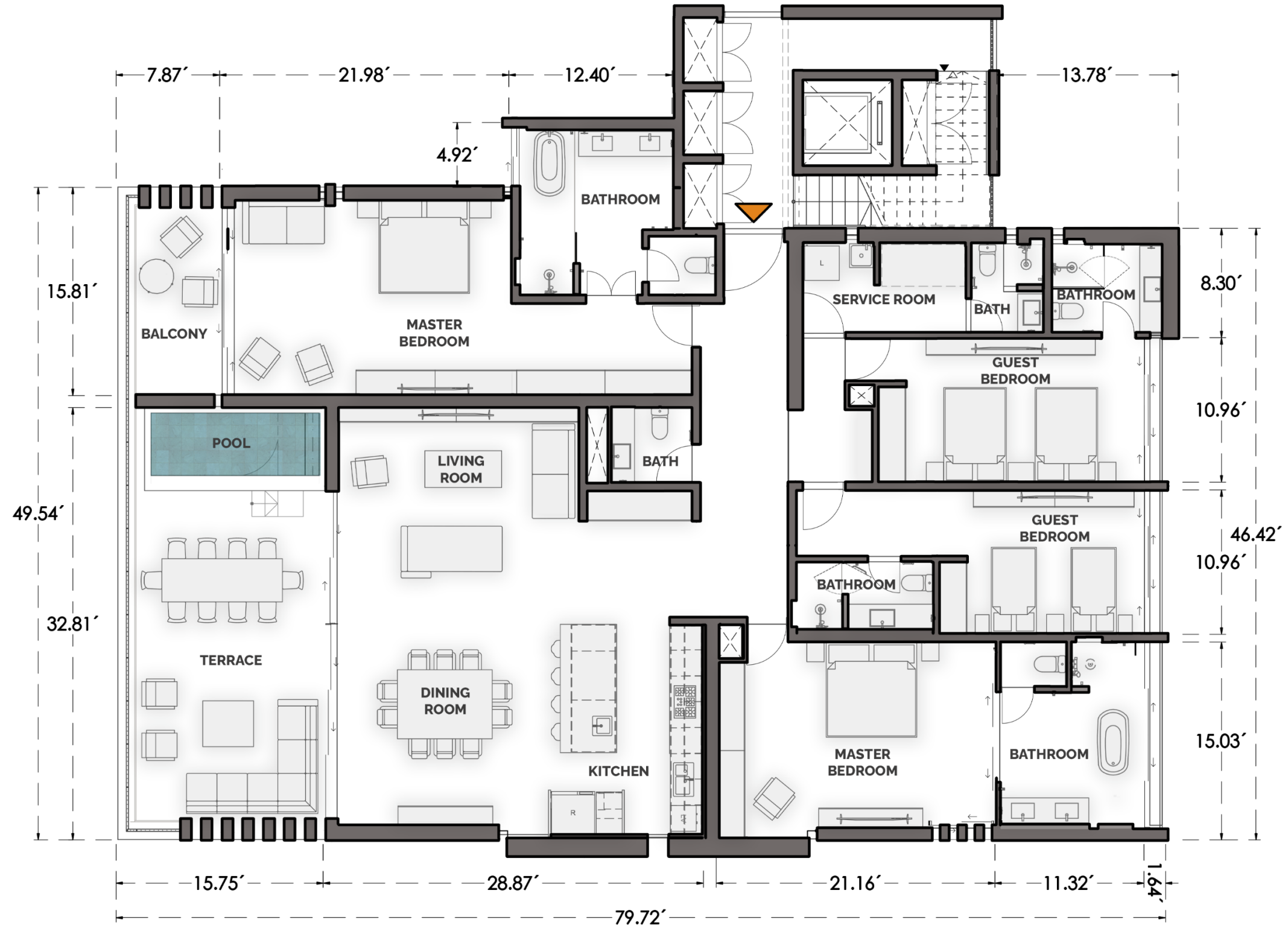
Interior	3,282.99 sq.ft./ 305m ²
Terrace, Balcony	645.84 sq.ft./ 60m ²
Total	3,928.83 sq.ft./ 365m²



LEVEL THREE



Interior	3,282.99 sq.ft./ 305m ²
Terrace, Balcony	645.84 sq.ft./ 60m ²
Total	3,928.83 sq.ft./ 365m²



LEVEL THREE



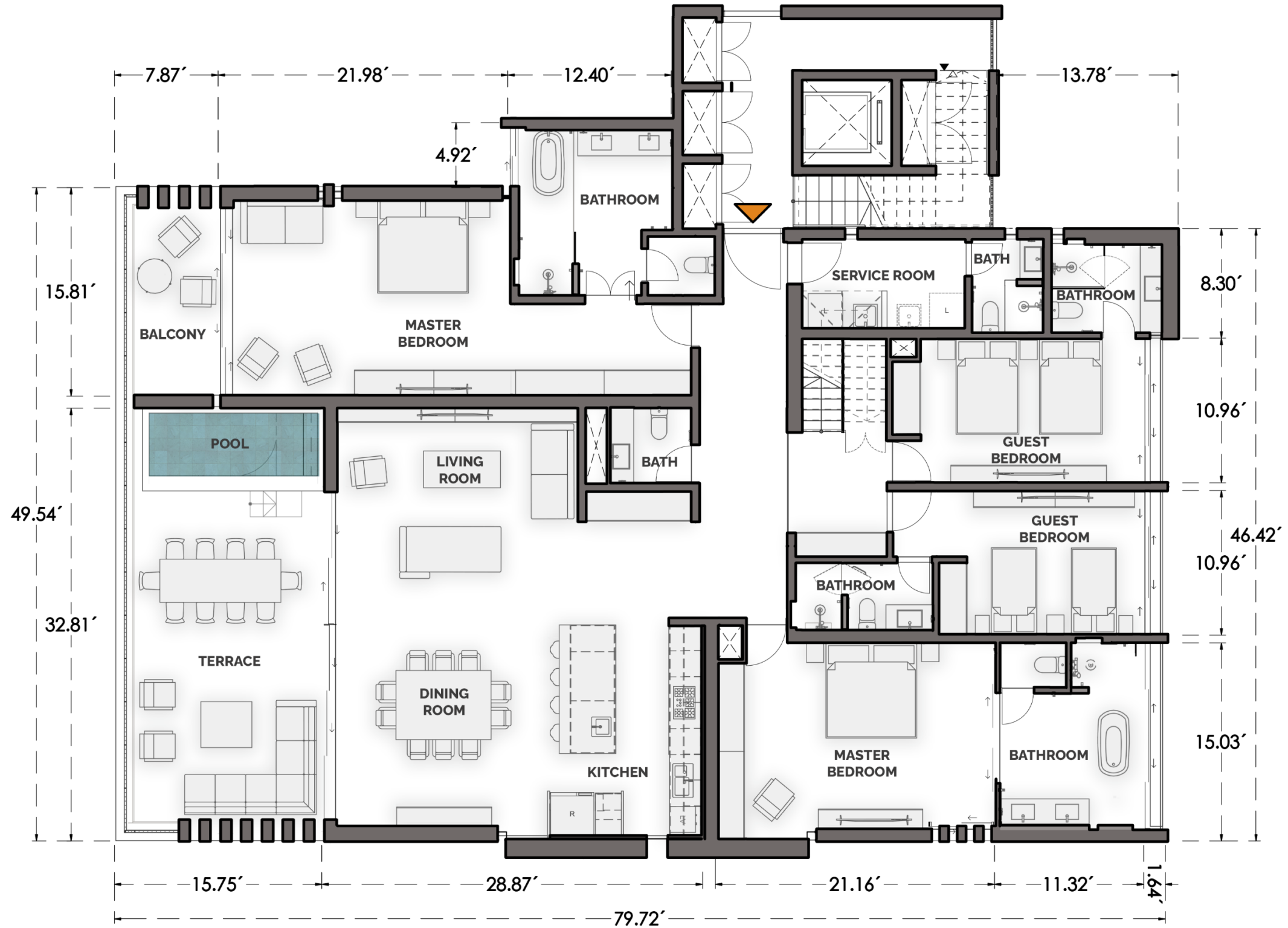
Interior	3,390.63 sq.ft./ 315m2
Terrace,Balcony	645.84 sq.ft./ 60m2
Roof Terrace	2,206.6 sq.ft./ 205m2
Total	6,243.07 sq.ft/ 580m2



PENTHOUSE



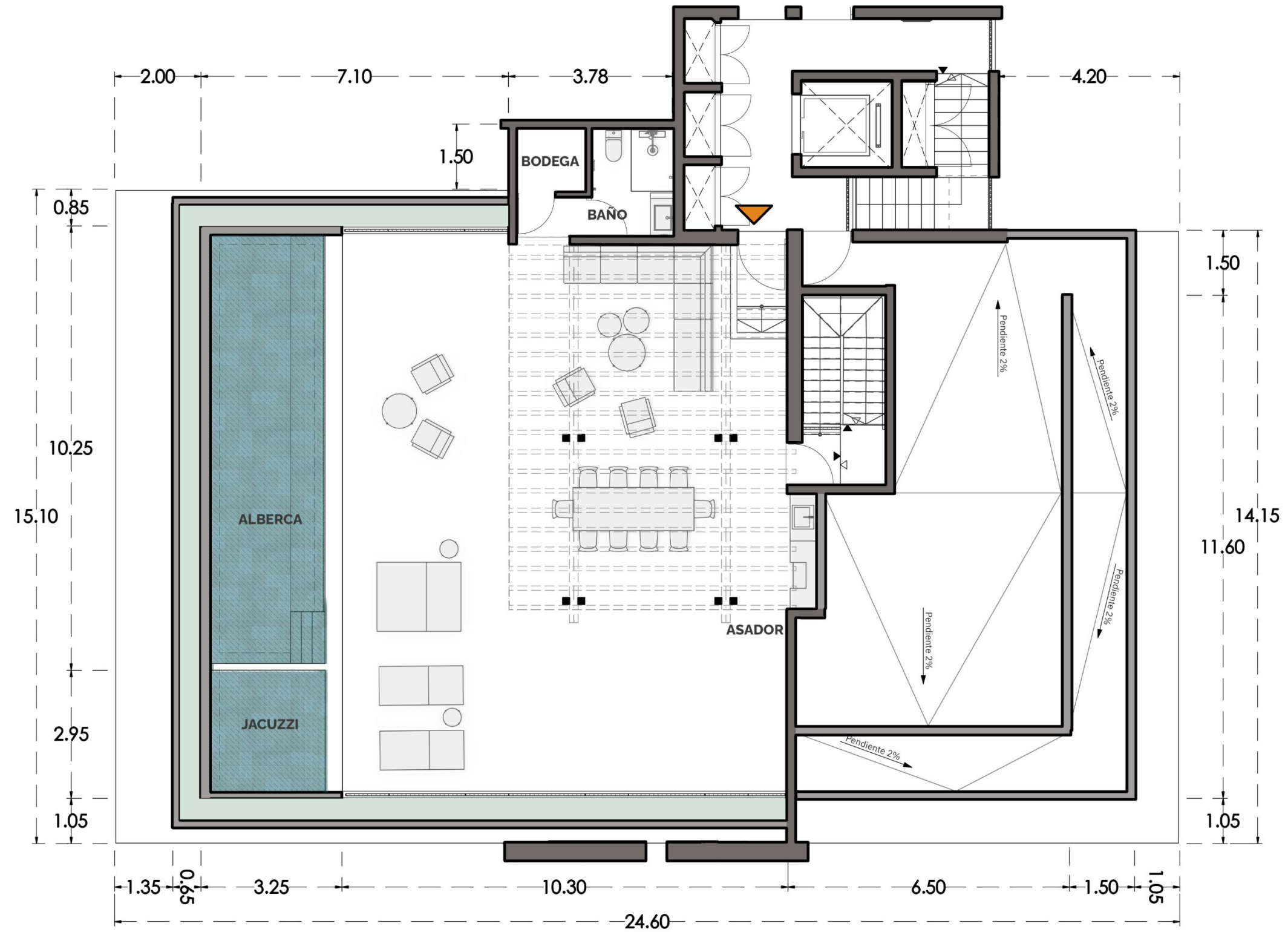
Interior	3,390.63 sq.ft./ 315m2
Terrace,Balcony	645.84 sq.ft./ 60m2
Roof Terrace	2,206.6 sq.ft./ 205m2
Total	6,243.07 sq.ft./ 580m2



PENTHOUSE



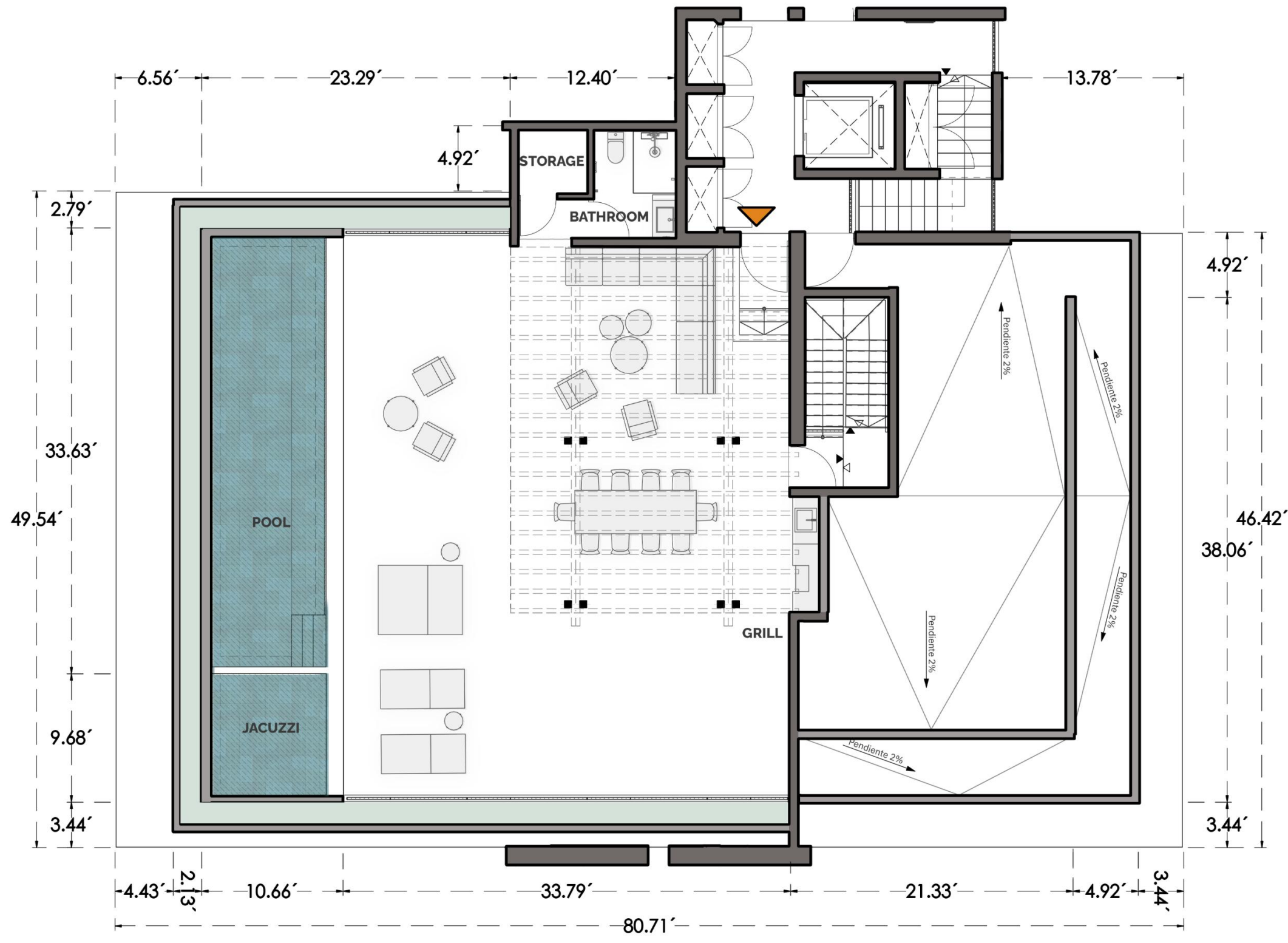
Interior	3,390.63 sq.ft./ 315m ²
Terrace,Balcony	645.84 sq.ft./ 60m ²
Roof Terrace	2,206.6 sq.ft./ 205m ²
Total	6,243.07 sq.ft./ 580m²



ROOF TERRACE



Interior	3,390.63 sq.ft./ 315m2
Terrace,Balcony	645.84 sq.ft./ 60m2
Roof Terrace	2,206.6 sq.ft./ 205m2
Total	6,243.07 sq.ft./ 580m2



ROOF TERRACE

CUORA

PUNTA MITA



Confidential

Subject to change at any time without notice